

Standard Thermocouple Connector Socket

Features

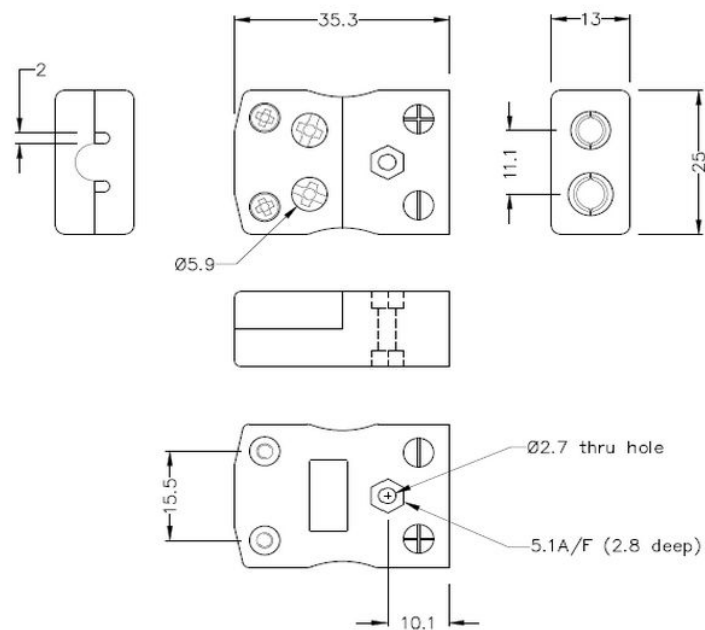
- Easy 'jab-in' connection for rapid termination
- Just push wire in and tighten screw
- Contacts are polarised to prevent incorrect connection



Specification

Thermocouple Type	J
Connector Size	Standard
Connector Type	Quick Wire Socket
Colour	Black
Min. Temperature	220°C
+Positive Contact	Fe
-Negative Contact	CuNi
Standards Met	BS EN 50212:1997; RoHS

Drawing



Standard in-line Socket - Quick Wire
(dimensions in mm)

Art. Nr.
RND 410-00215